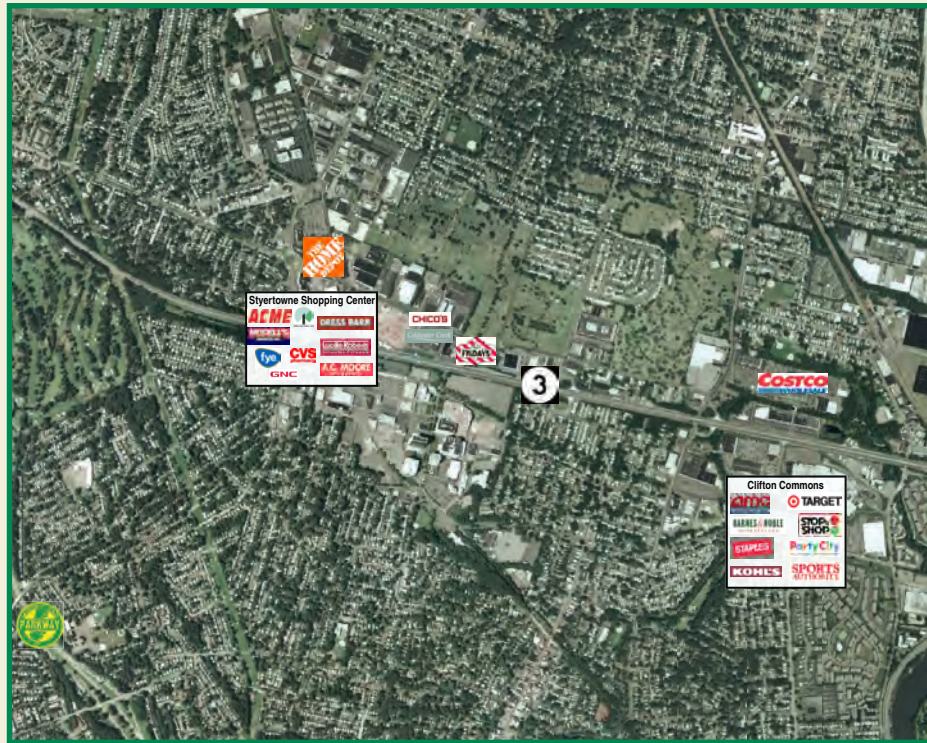


# Styertowne Shopping Center

Route 3 and Bloomfield Avenue  
Clifton, New Jersey



**Demographics: 3 Miles 5 Miles**  
2008 Projection

Population	244,093	619,322
Households	87,199	225,784
Avg HH Inc.	\$90,225	\$84,780
Avg Age	37.3	37.1

Average Daily Traffic 132,600

- Extraordinary Rt. 3 Visibility & Access
- One Minute from Garden State Parkway
- 5 Minutes from NJ Turnpike
- Ten Minutes from NYC



# Styertowne Shopping Center

Clifton, New Jersey



**JOIN**  
Acme Supermarket,  
AC Moore, Dress Barn,  
Modell's, FYE,  
Dollar Tree, GNC



Just across the street from Home Depot & minutes from Barnes and Noble, Kohl's, Staples, Annie Sez, Target, AMC Cinema and Sports Authority



**Jacobs Enterprises, Inc.**  
Real Estate Development & Services  
1051 Bloomfield Avenue  
Clifton, New Jersey 07012  
973-591-5222 Tel • 973-591-5223 Fax  
peter@jacobs-enterprises.com  
www.jacobs-enterprises.com



**Jacobs Enterprises, Inc.**  
Real Estate Development & Services  
1051 Bloomfield Avenue  
Clifton, New Jersey 07012  
973-591-5222 Tel • 973-591-5223 Fax  
peter@jacobs-enterprises.com  
www.jacobs-enterprises.com

# Styertowne Shopping Center

Route 3 Westbound and Bloomfield Avenue  
Clifton, New Jersey



**Jacobs Enterprises, Inc.**  
Real Estate Development & Services  
1051 Bloomfield Avenue  
Clifton, New Jersey 07012  
973-591-5222 Tel • 973-591-5223 Fax  
peter@jacobs-enterprises.com  
www.jacobs-enterprises.com

## Tenant Roster (and GLA)

1. Valley National Bank	3,000 sf	18. Seasons Chinese Rest	2,000 sf
2. Chiropractic Center	1,919 sf	19. Crystal Optics *	2,048 sf
3. Kim's Nails	921 sf	20. Taste of Tuscany Restaurant *	1,240 sf
4. Cleaners 2000	845 sf	21. Antonio's Hair Salon*	593 sf
5. Post Office	3,680 sf	22. Footnotes Bookstore *	500 sf
6. CVS Pharmacy	12,840 sf	23. Exchange Florist *	1,540 sf
7. FYE	5,000 sf	24. Dunkin Donuts *	2,142 sf
8. Subway	1,500 sf	25. Largo House Spa *	3,600 sf
9. Styertowne Bakery	1,500 sf	26. Avante Garde Salon *	550 sf
10. Shereed's Boutique	1,500 sf	27. Dress Barn (1st level)	8,000 sf
11. Muscle Maker Grill	1,500 sf	28. <b>Available (1st &amp; 2nd levels)</b>	<b>20,000 sf</b>
12. Bertelli's Wines	2,500 sf	29. Modell's (lower level) *	14,000 sf
13. Dollar Tree	23,121 sf	30. Acme Supermarket *	54,609 sf
(1st & 2nd levels)		31. <b>Available *</b>	<b>4,000 sf</b>
14. MODA Shoes	3,235 sf	32. AC Moore Arts & Crafts *	21,000 sf
15. Corbo Jewelry	2,808 sf	33. Lucille Roberts *	9,100 sf
16. GNC	2,500 sf		
17. Radio Shack	2,500 sf		

\* Lower level

## Key Map

